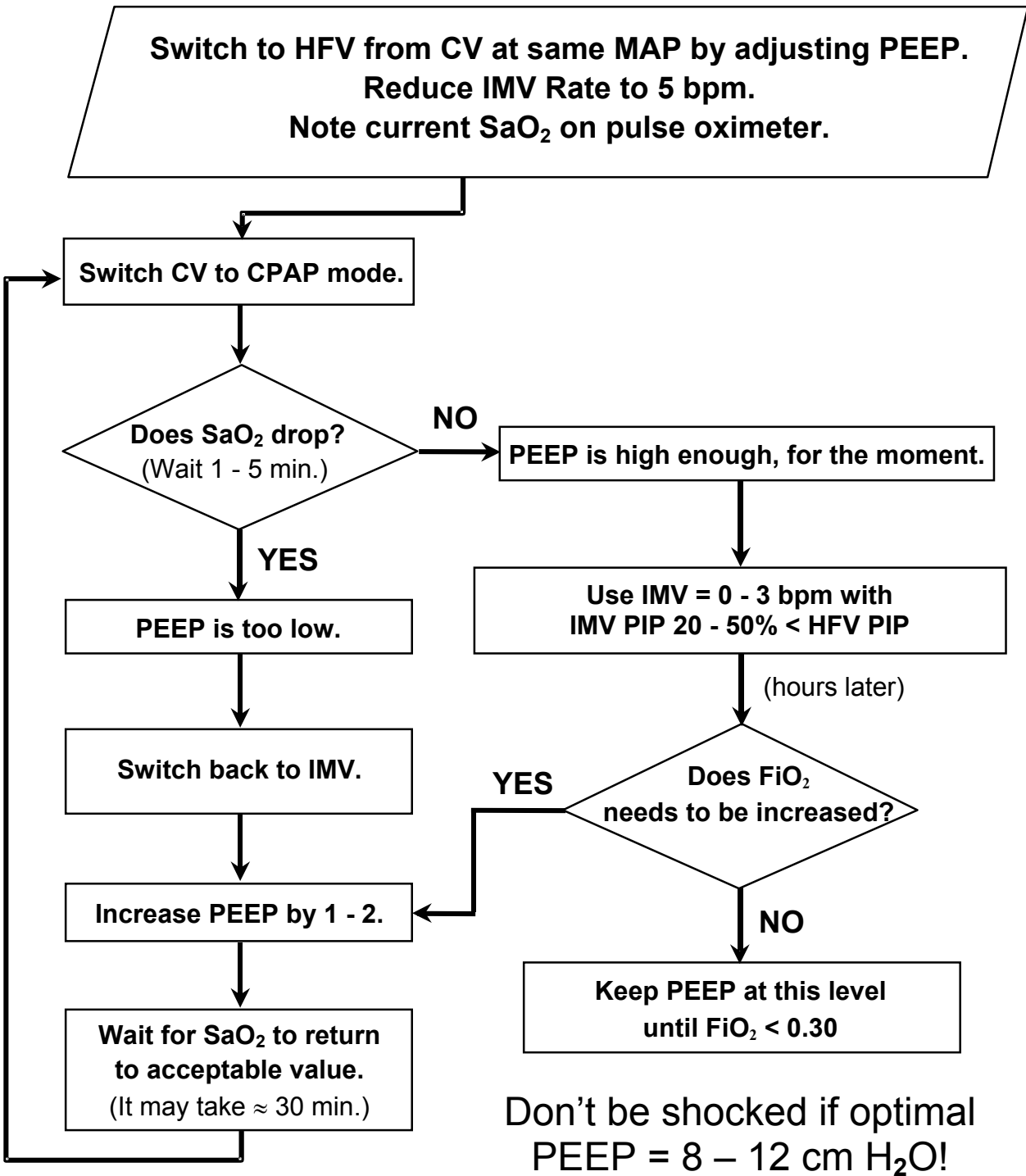


Finding Optimal PEEP during HFV *



Don't be shocked if optimal PEEP = 8 – 12 cm H₂O!

* when switching from CV to HFV.

Warnings: Lowering PEEP may improve SaO₂ in some cases.

Optimal PEEP may be lower in patients with active air leaks or hemodynamic problems.

Using IMV with high PEEP is hazardous. Do not assume high PEEP causes over-expansion.



1-800-800-4358

www.bunl.com